

NPKS 型两级单吸离心泵

NPKS Type Double-stage Single-suction Centrifugal Pump

一、概述

Overview

NPKS 型泵为两级单吸水平中开式离心泵，适用于输送清水或物理化学性质类似于清水的其它液体，被输送介质的温度为-20℃--80℃、适用于城市排水、水利工程和暖通空调系统、冶金矿山、石化及化工、造纸、轻工、火力发电等领域。

NPKS type double-stage single-suction centrifugal pump is used deliver clean water or other liquid whose physicochemical property is similar to water within temperature range of -20℃~80℃. It is applicable to municipal drainage, irrigation works, HVAC system, metallurgy and mining as well as petrochemical and chemical, papermaking, light industry and power generation, etc.

二、性能范围

Performance range

转速：2980rpm、1480rpm 和 980rpm

进口直径：100~500 (mm)

流量：50~3000 (m³/h)

扬程：110~370 (m)

Speed: 2980rpm, 1480rpm and 980rpm

Inlet diameter: 100~500 (mm)

Flow: 50~3000 (m³/h)

Head: 110~370 (m)

三、型号说明

Model description

N P K S 8 - 2 4 0

NPKS——两级单吸水平中开式离心泵

8——吸入口径除以 25 的商（即吸入口径为 200mm）

240 ——设计点扬程

NPKS - double-stage single-suction split centrifugal pump

8 - The quotient obtained by dividing inlet diameter by 25 (i.e. inlet diameter is 200mm)

240 - Head at design point

保留技术更改的权力 ALL THE RIGHT TO ALTER TECHNOLOGY DOCUMENTS RESERVED

四、结构说明

Structure description

泵为卧式安装，水平吸入、水平吐出。

The pump is horizontally installed with horizontal suction and horizontal discharge.

泵为水平中开式结构，检修时不需拆卸进出口管路，揭开泵盖即可对转子部件进行检修。

The pump is horizontal split type. Rotating parts can be repaired by opening the pump cover without dismantling inlet/outlet pipes.

轴封可根据用户要求采用填料密封或机械密封。

Shaft seal can adopt packing seal or mechanical seal in accordance with user's requirement.

轴承为滚动轴承，采用油脂润滑；用户需要时，也可采用稀油润滑。

Bearings are rolling bearings which adopt grease lubrication; on user's request, dilute oil lubrication also can be used.

叶轮采用对称布置结构，可以平衡大部分水力轴向力；残余轴向力由轴承承受。

Impeller adopts symmetrical structure arrangement, which can balance most hydraulic axial force; the residual axial force is borne by bearing.

五、主要零件材质表

Material list of main parts

泵体、泵盖 Pump casing, pump cover	叶轮 Impeller	主轴 Line shaft	轴套 Shaft sleeve	口环 Ring	密封 Seal
铸铁 Cast iron	铸铁 Cast iron			球铁 Ductile iron	填料密封 Packing seal 机械密封 Mechanical seal
球铁 Ductile iron	球铁 Ductile iron	45	球铁 Ductile iron	青铜 Bronze	
铸钢 Cast steel	铸钢 Cast steel	不锈钢 Stainless steel	不锈钢 Stainless steel	不锈钢 Stainless steel	
不锈钢 Stainless steel	青铜 Bronze				

用户若对材质有特殊要求，可与本公司协商确定

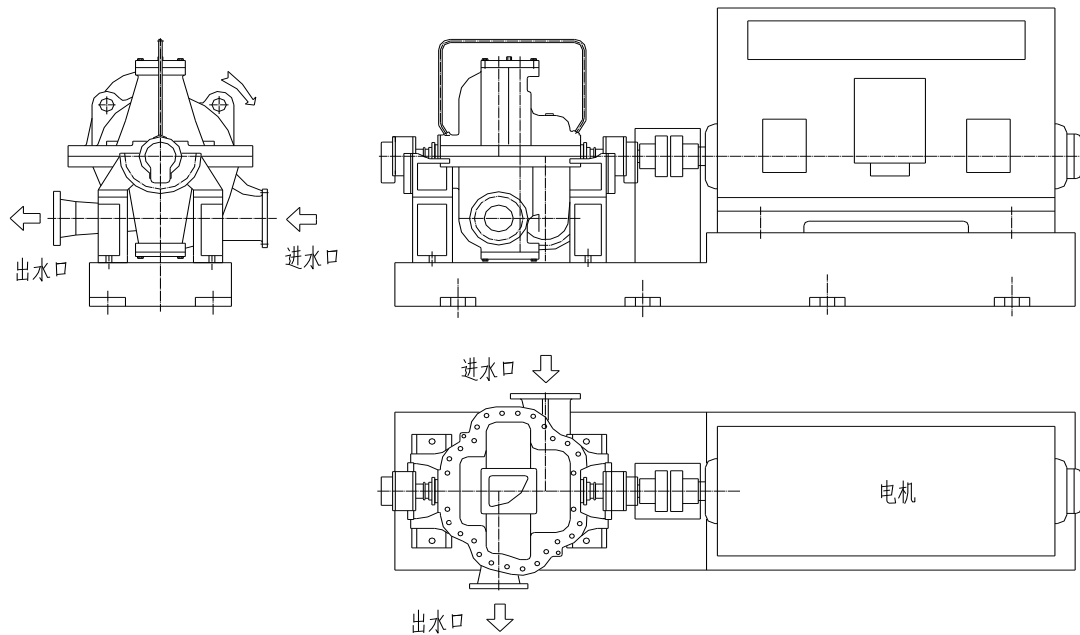
If users have special requirements on materials, please negotiate with our company.

六、旋转方向

Rotating direction

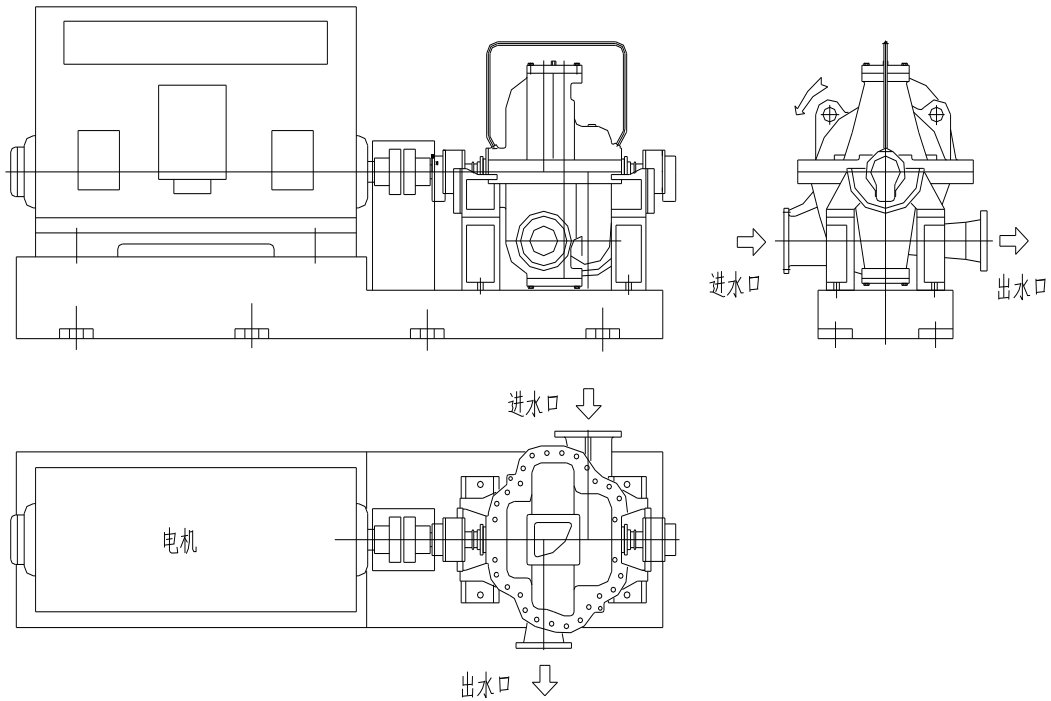
为便于泵房平面布置，该系列泵设计了标准型与特殊型两种不同转向。标准型为：从驱动端向泵看，泵顺时针方向旋转；此时泵吸入口在右侧，吐出口在左侧，进水管路接近电机端。特殊型为：从驱动端向泵看，泵逆时针方向旋转；此时泵吸入口在左侧，吐出口在右侧，出水管路接近电机端。

For the convenience of pumping station layout, pumps of this type have stand and special directions. The standard direction: pump rotates clockwise as viewing from diver end, so pump suction is at the right side and discharge is at the left side with inlet pipe near motor end. The special direction: pump rotates counter-clockwise as viewing from diver end, so pump suction is at the left side and discharge is at the right side with outlet pipe near motor end.



泵旋向示意图：标准型（从驱动端向泵看，泵顺时针方向旋转）

Pump rotating direction diagram: standard type (pump rotates clockwise as viewing from diver end)



泵旋向示意图：特殊型（从驱动端向泵看，泵逆时针方向旋转）

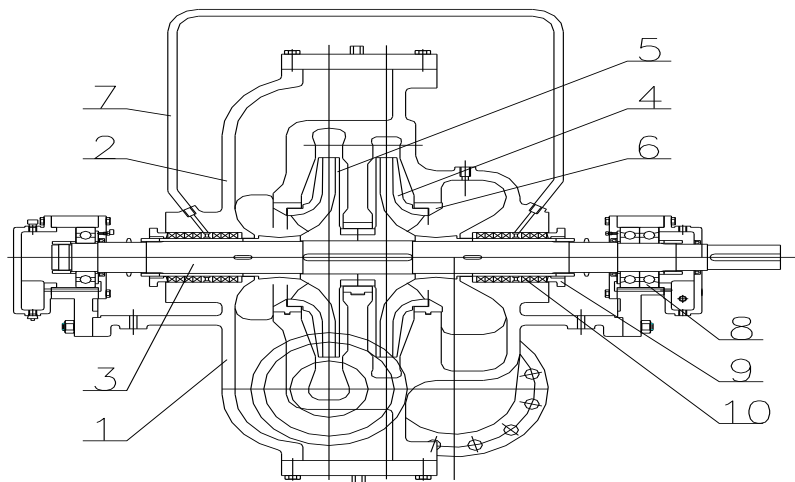
Pump rotating direction diagram: special type (pump rotates counter-clockwise as viewing from driver end)

七、结构图

Structure drawings

结构图一

Structure drawing 1



1、泵体 2、泵盖 3、主轴 4、首级叶轮 5、次级叶轮 6、密封环

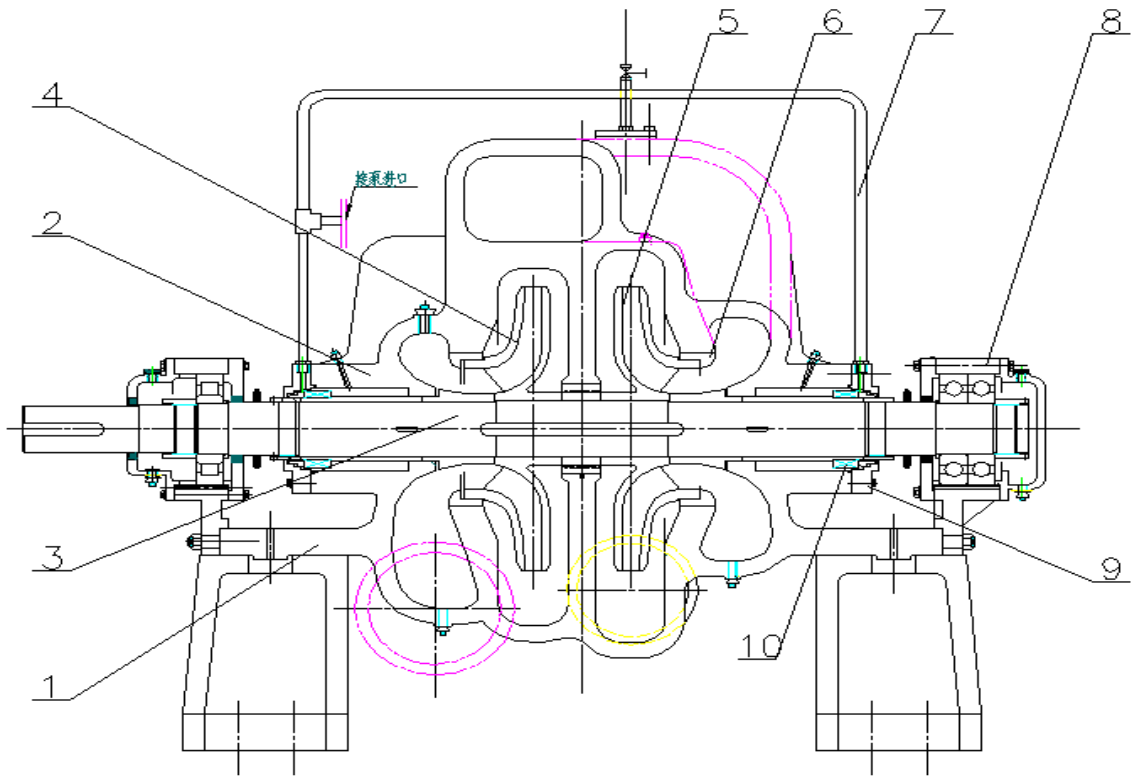
7、水封管 8、轴承部件 9、填料压盖（机封压盖） 10、填料（机封）

保留技术更改的权力

ALL THE RIGHT TO ALTER TECHNOLOGY DOCUMENTS RESERVED

1. Casing
2. Pump cover
3. Main shaft
4. First-stage impeller
5. Secondary impeller
6. Seal ring
7. Water seal pipe
8. Bearing parts
9. Packing gland (mechanical seal gland)
10. Packing (mechanical seal)

结构图二
Structure drawing 2



八、型谱图

Spectrum diagram

