

湖南耐普泵业股份有限公司
HUNAN NEPTUNE PUMP CO., LTD.

LXW 型节能无密封液下排污泵

**LXW type seal-free submerged sewage
pump**



无堵塞

Non-clogging

采用螺旋式叶轮，含有大颗粒固状物的介质能够在宽流道内畅通无阻。

Spiral impeller is adopted, so the liquid containing large particles of solid can flow in the channel smoothly.

低能耗

Low energy consumption

采用新式叶轮设计，有效降低能耗。

Impeller of new design is adopted to lower the energy consumption effectively.

维护简单

Easy maintenance

仅需在轴承部件加润滑脂即可。
Lubricating grease is only needed for the bearing parts.

耐腐蚀

Corrosion resisting

过流部件采用耐腐蚀合金，使其具有超强的耐腐蚀性。

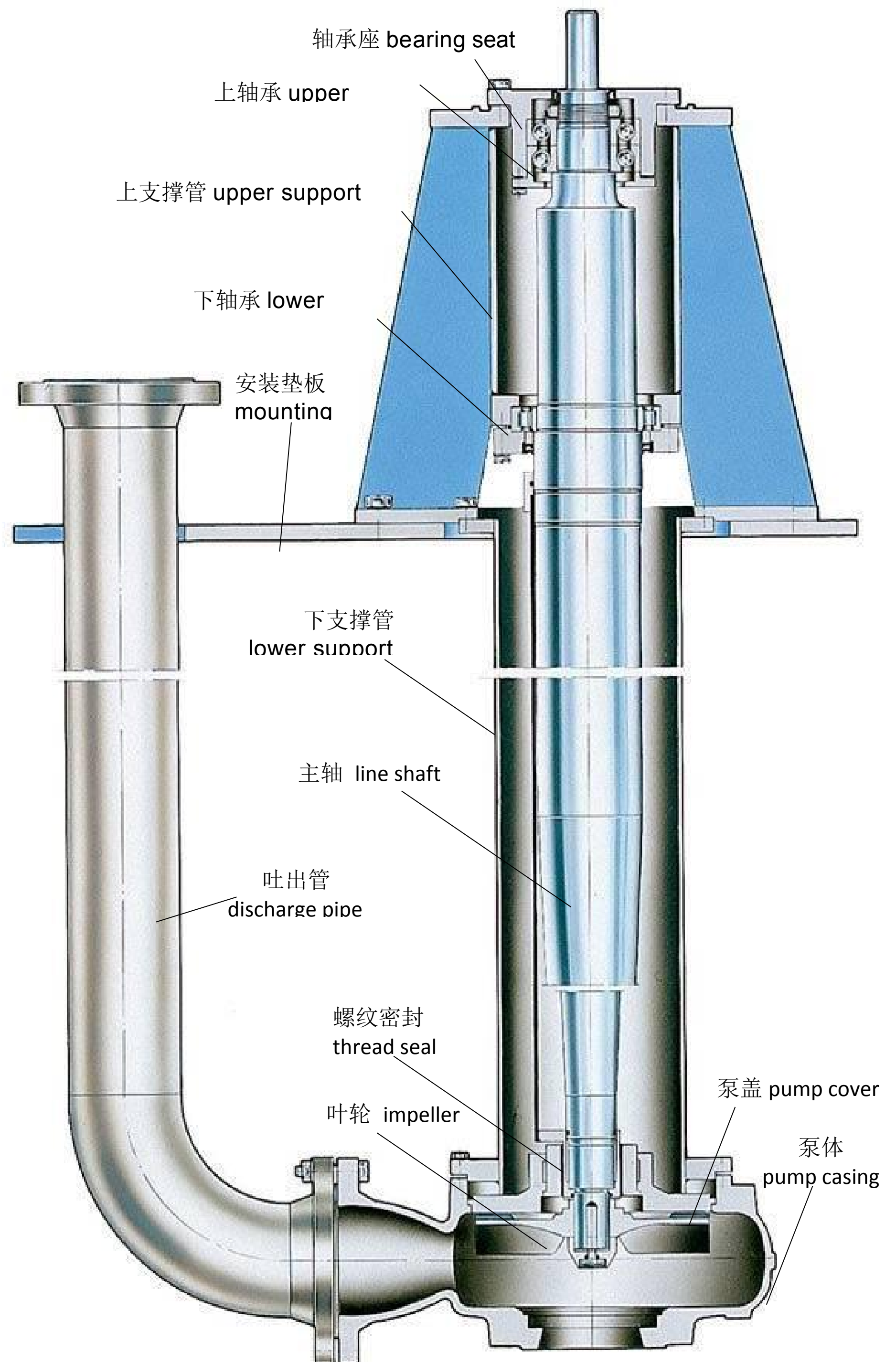
Made of corrosion-resisting alloy, flow passing components have superior corrosion resistance.

适用范围广泛

Wide scope of application

能广泛适用于市政、电力、石化、钢厂等污水处理工程。

It is widely used in municipal, power, petrochemical, steel and other sewage treatment works.

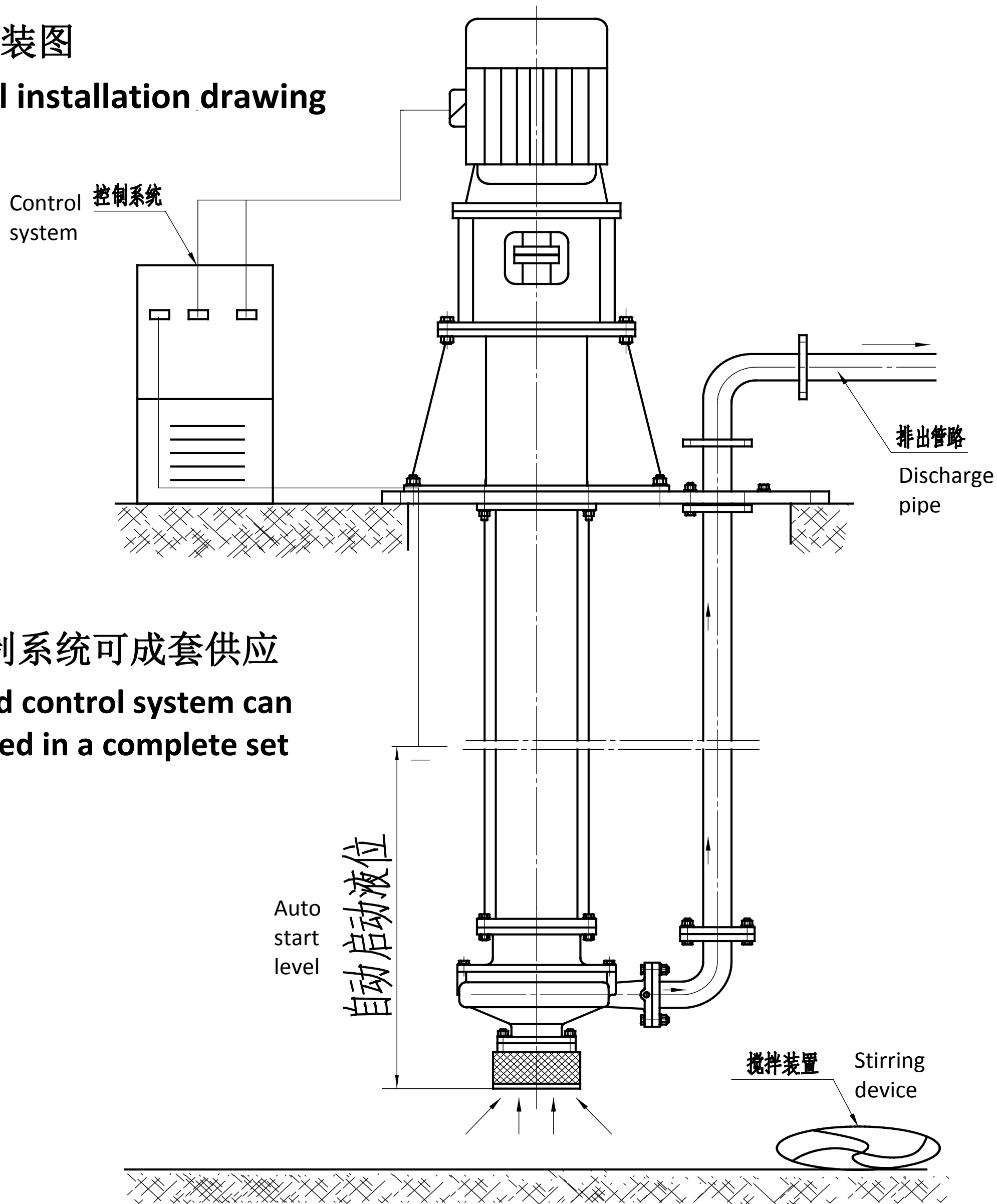


保留技术更改权利

Reserve the right to change

整体安装图

Integral installation drawing



泵与控制系统可成套供应

Pump and control system can be supplied in a complete set

智能控制系统

Intelligent control system

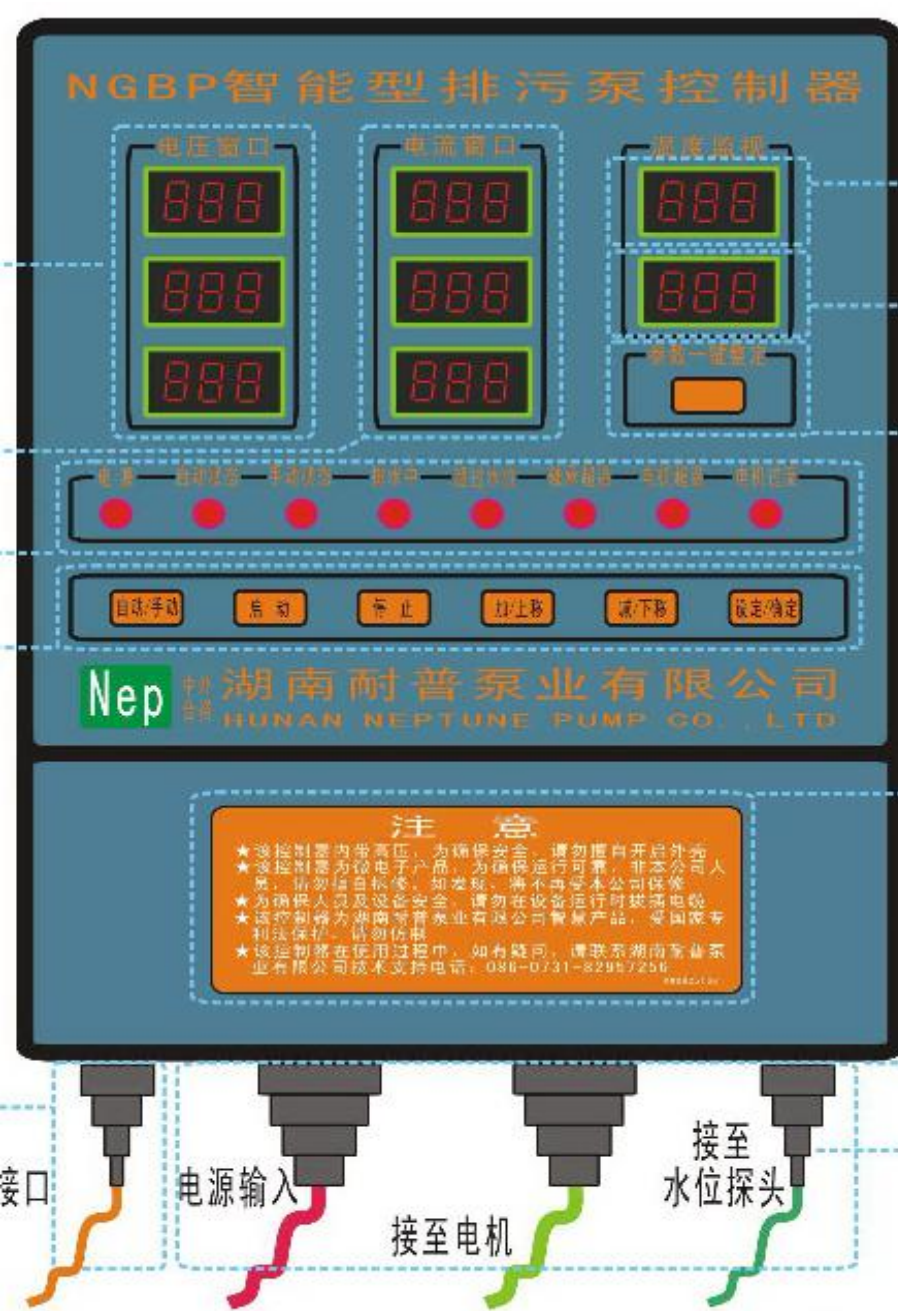
采用探杆电极，保证控制液位准确、可靠；
数字显示及设置，方便操作及观测；
远程监视方便管理；

系统与泵组一体化，安装使用方便、简捷。

Probe electrode is adopted to ensure accurate and reliable level control;

Digital display and configuration is convenient for operation and observation;

Remote monitoring is convenient for management;
The integration of system and pump unit is easy and convenient for installation and operation.

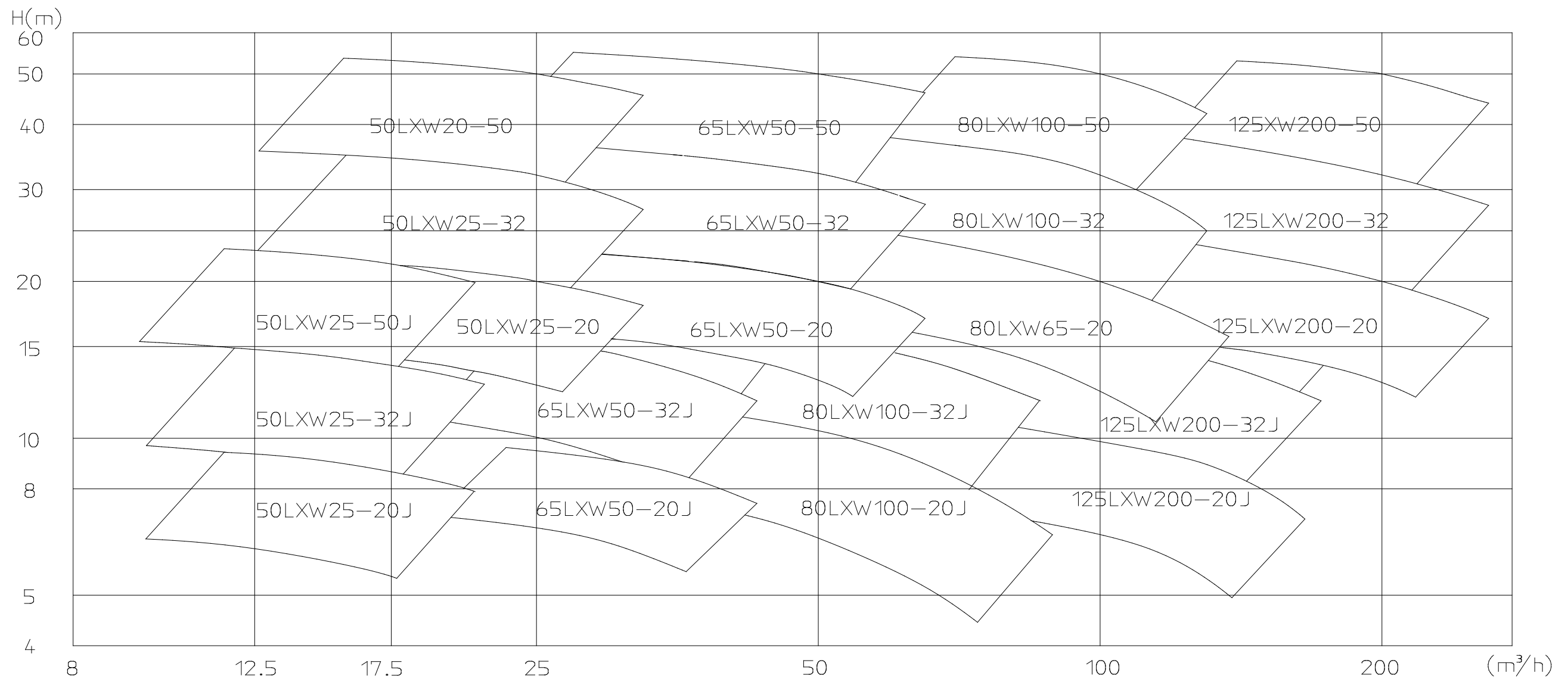


Conne ction Power input Connect to motor Connect to level sensor

保留技术更改权利

Reserve the right to change

Type Spectrum Diagram



性能参数表

Type Spectrum Diagram

泵型号 Type	流量 Flow rate		扬程 Head m	转速 Rotation speed r/min	轴功率 Brake power kW	配套功率 Matched power kW	效率 Efficiency %	必需汽蚀余量 NPSHr m	泵口径 Dia. of pump 吐出 Disc mm
	m³/h	L/s							
50LXW25-20	17.5	4.9	21.5	1480	1.97	3	52	2.5	50
	25	6.9	20		2.27		60		
	32.5	9.0	18		2.57		62		
50LXW25-32	17.9	5.0	34	1480	3.85	5.5	43	2.5	50
	25	6.9	32		4.03		54		
	33.2	9.2	29		4.37		60		
50LXW25-50	17.5	4.9	52.7	1480	6.28	11	40	2.5	50
	25	6.9	50		7.4		46		
	32.5	9.0	45.5		8.05		50		
65LXW50-20	35	9.7	22	1480	3.28	5.5	64	3.0	65
	50	13.9	20		3.78		72		
	65	18.1	17		4.12		73		
65LXW50-32	35	9.7	36	1480	6.13	11	56	3.0	65
	50	13.9	32		6.70		65		
	65	18.1	27		7.03		68		
65LXW50-50	35	9.7	54	1480	11.2	15	46	3.0	65
	50	13.9	50		11.9		57		
	65	18.1	44		12.4		63		
80LXW100-20	70	19.4	24	1480	6.4	11	72	4.5	80
	100	27.8	20		7.0		78		
	130	36.1	14		7.5		66		
80LXW100-32	70	19.4	36	1480	10.7	15	63	4.5	80
	100	27.8	32		11.6		74		
	130	36.1	27		12.6		75		
80LXW100-50	70	19.4	55	1480	16.1	22	65	4.0	80
	100	27.8	50		18.9		72		
	130	36.1	44.5		21.3		74		
125LXW200-20	140	38.9	23	1480	12	18.5	73	3.0	125
	200	55.6	20		13.8		79		
	250	69.4	16		15.1		72		
125LXW200-32	140	38.9	36	1480	19.6	30	70	3.5	125
	200	55.6	32		22.3		78		
	260	72.2	27		26.2		73		
125LXW200-50	150	41.7	53	1480	31.8	45	68	3.5	125
	200	55.6	50		36.3		75		
	270	75.0	45		46.6		71		

外形尺寸图

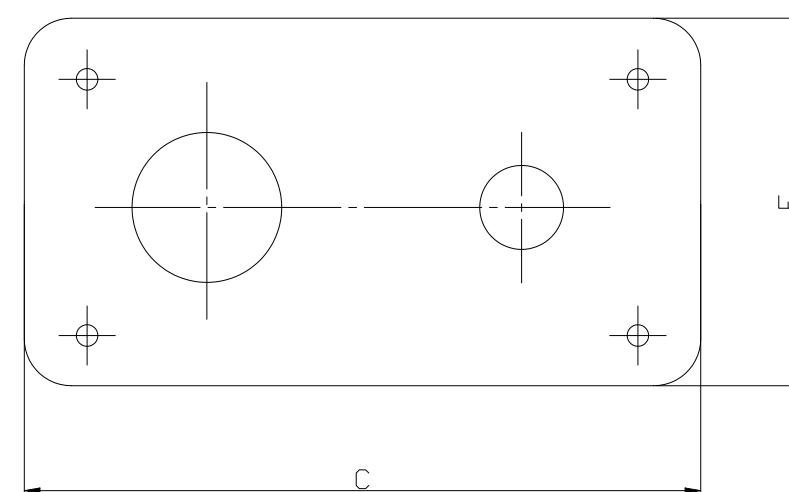
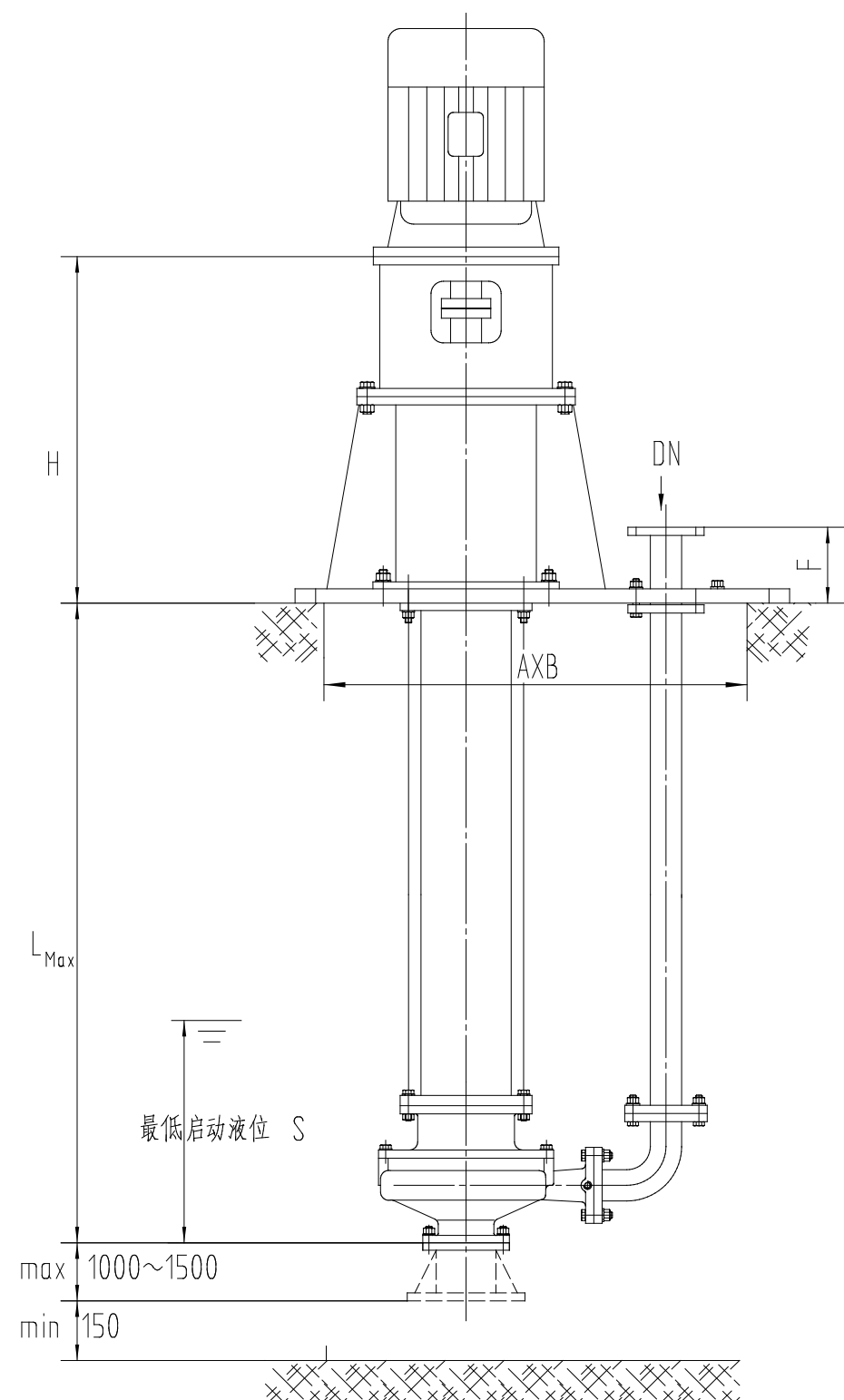
湖南耐普泵业股份有限公司

保留技术更改权利

Reserve the right to change

www.hnnep.com

Outline Dimensional Drawing



注：进口可安装吸入管，将泵延长1至1.5米

Note: Suction pipe can be installed at the inlet to extend the pump to 1-1.5 m.

泵型号	A	B	H	F	L _{max}	S	C x E	DN
50LXW25-20	900	500	520	100	1500	200	1030 x 630	50
50LXW25-32	950	500	440	100	1500	200	1080 x 630	50
50LXW25-50	1050	500	460	100	1500	200	1180 x 630	50
65LXW50-20	930	550	490	100	1500	250	1080 x 680	65
65LXW50-32	1000	550	570	100	1500	250	1130 x 680	65
65LXW50-50	1080	550	595	100	1500	250	1230 x 680	65
80LXW100-20	1000	600	750	150	2000	300	1150 x 750	80
80LXW100-32	1050	600	580	150	2000	300	1200 x 750	80
80LXW100-50	1150	600	580	150	2000	300	1300 x 750	80
125LXW200-20	1150	630	580	150	2000	350	1300 x 800	125
125LXW200-32	1200	630	520	150	2000	350	1350 x 800	125
125LXW200-50	1240	620	670	150	2000	350	1400 x 800	125

保留技术更改权利

Reserve the right to change