

LB、LK 立式斜流泵 Vertical Mixed Flow Pump

产品概述

LB、LK 型立式斜流泵是一种大流量低扬程产品，适用于电厂、钢厂、自来水公司、污水处理厂、石油化工、矿山等工矿企业，以及市政给排水工程、农业灌溉、防洪排涝等工程。可以用来输送 55℃ 以下的清水、雨水、铁皮坑水、污水以及海水等介质，流量范围 600-70000m³/h，扬程范围 4-70m。特殊设计的输送介质温度可达 150℃。符合我公司参与起草的国家标准 JB/T10812-2007《立式斜流泵》，具有循环润滑轴承装置专利（专利号 200620050566.6）、一种套筒联轴器（专利号 201320103729.2）、一种海水泵自润滑系统（专利号 201320609038.X）等十几种专利。

Application:

LB / LK mixed flow pump is a pump with large flow and low head. It is applicable to projects of petrochemical industry, offshore platform, LNG station, electric power plant, steel plant, water supply plant, sewage treatment plant, mines and other industrial companies as well as drainage, irrigation, flood control and drainage works. It can pump clean water, rain water, seawater, clear water, iron scale pit water, sewage and other liquid below 55℃ whose flow ranges in 600-70000m³/h and head ranges in 4-70m. With special design, it is able to pump liquid of temperature up to 150℃. It follows the national standard JB/T10812-2007 *Vertical Mixed Flow Pump* (Nep is one of the drafters of this standard) and has won a dozen of patents, including circulating lube bearing device (patent No. 200620050566.6), a type of sleeve coupling (patent No. 201320103729.2), a self-lubrication system for seawater pump (patent No. 201320609038.X).

产品特点

- 1、运行平稳，安全可靠，免抽真空启动，使用寿命周期长。
- 2、泵体积小，基础占地面积少，基础以下泵长度可以调整，适应性强。
- 3、流道简单可靠，节省泵房基建投资。
- 4、结构合理，装拆方便，维护检修容易简便。
- 5、泵效率高，降低运行成本。
- 6、标准化程度高，零部件通用互换性强。

Features

1. Operation smooth, safe and reliable, starting without vacuumizing, service life long.
2. The volume of the pump small, less occupied land area, saving the investment for construction of the pump house.
3. The pump length under foundation is adjustable with good applicability.
4. Structure reasonable, convenient for mounting and dismantling, easy to maintain and inspect.
5. Flowing channel simple and reliable, Efficiency high, operating cost reduced.
6. Higher standardization, and better interchangeability of components.

型号说明 model instruction

1800LK6.9-21.5 I

1800——泵吐出口径 1800mm

L——立式斜流泵

K——转子可抽芯

6.9——泵的设计流量 6.9m³/s

21.5——泵的单级设计扬程 21.5m

I——泵设计顺序（第一次设计无标示）

1800LK6.9-21.5 I

1800—Outlet of the pump: 1800 mm

L---Vertical mixed flow pump

K---Pull-out rotor

21.5---Design head

I ---Pump design class (no mark when the first time design)

Remarks: multistage type is usually
Not designed for the pump of large
nozzle diameter.

900LB2.1-11.2 I

900——泵吐出口径 900mm

L——立式斜流泵

B——转子不可抽芯

2.1——泵的设计流量 2.1m³/s

11.2——泵的单级设计扬程 11.2m

I——泵设计顺序（第一次设计无标示）

900LB2.1-11.2 I

900—Outlet of the pump:900mm

L---Vertical mixed flow pump

B---Non pull-out rotor

11.2---Design head

I ---Pump design class (no mark when first time design)

产品结构说明

- 1、 LK、LB 型泵为立式单级离心式或斜流式带导叶体结构。
- 2、 泵的结构型式有泵吐出口在安装基础之上和之下(型式代号分别为 S 和 X)、泵承受轴向力和电机承受轴向力(型式代号分别为 T 和 D)、外接润滑油和泵自身润滑等形式。
- 3、 泵安装型式有湿坑式安装或干坑式安装。
湿坑式安装：泵下部浸没在吸水池中。
干坑式安装：泵采用管道进水，泵吸入喇叭口与进水管之间采用 90° 肘形进水弯管联接。
- 4、 泵轴承为橡胶导轴承、聚四氟乙烯或赛龙导轴承。

- 5、 泵口径在 1000mm 以下时，泵转子一般为不可抽形式；泵轴向水推力及转子重量一般由泵本体推力轴承承受，泵和电机之间采用弹性联接；泵吐出口位于安装面基础之上（型式代号为 ST 的结构形式）。如有要求，也可以由电机承受轴向水推力及转子重量；或其它结构形式的组合（型式代号为 SD、XT、XD）；用户如有要求，也可以设计成可抽式结构形式。泵口径在 1000mm 以上时，泵转子一般为可抽形式；泵轴向水推力及转子重量一般由电机推力轴承承受，泵和电机之间采用刚性联接；泵吐出口位于安装面基础之下（型式代号为 XD）。如有要求，也可以由泵承受轴向水推力及转子重量；或其它结构形式的组合（型式代号为 XT、SD、ST）。用户如有要求，也可以设计成不可抽式结构形式。
- 6、 泵本体承受轴向水推力及转子重量时，泵采用专利产品循环润滑油装置，除具有透气、防水、测温 (PT100)、加油、油位显示及冷却等功能外，还具有油位自动循环的淋浴润滑功能。可达到在环境温度为 40℃ 时，轴承的指示温度不超过 65℃，润滑效果好，轴承发热少，使用寿命长。
- 7、 泵轴向密封采用填料密封。
- 8、 主轴联接采用哈夫联轴器或套筒联轴器，具有可靠性高，结构简单，对接容易，拆装方便，定位准确可靠。
- 9、 在泵安装基础上可以进行叶轮与叶轮室（转动部分与静止部分）之间间隙的调整，操作方便。
- 10、 从吐出方向往泵看，电机接线盒与泵外接润滑油接管位于左侧。也可根据用户要求，布置在其它方位。

Structure feature:

1. Series LK, LB pumps are of vertical single stage and/or multistage centrifugal or mixed flow with diffuser types.
2. The following structure types are available for the pump: the discharge opening above and/or under the mounting foundation (Type Code named S and X respectively);the axial thrust force born by the pump and/or by the motor(Type Code named T and D);lubricating water from outside and/or from the pump itself.
3. The intake sump is of wet pit and/or dry pit types.
Wet pit type: lower part of the pump inundated in the intake sump.
Dry pit type: the water enters into the pump, the suction bell-mouth is connected with the inlet pipe of the pump by means of elbow bend pipe of 90°.
4. Rubber, Teflon, Thordon guide bearings are selectable for bearings of the pump.
5. Generally when the nozzle diameter of the pump is under 1000mm, non pull-out type is adopted for the rotor and the discharge opening is above the mounting foundation (Type Code named ST). In this case the axial thrust force and the weight of the rotor are usually born by thrust bearings of the pump

itself and flexible connection is adopted between the pump and the motor. The thrust force and the weight of the rotor can also be born by the motor if required, or other structure types such as SD, XT, XD are available. Rotor pull-out type can also be adopted if required by clients.

Generally when the discharge diameter of the pump is above 1000mm, pull-out type is adopted for the rotor and the discharge opening is under the mounting foundation (Type Code named XD). In this case the axial thrust force and the weight of the rotor are usually born by thrust bearings of the motor and rigid connection is adopted between the pump and the motor. The axial thrust force and the weight of the rotor can also be born by the pump if required, or other structure types such as XT, SD, ST are available. Rotor non pull-out type can also be adopted if required by clients.

- When the axial thrust force and the weight of the rotor are born by pump itself, the thrust bearing of the pump is lubricated with dilute oil and is equipped with a temperature detector Pt100 to detect bearing temperature and a pressure type thermometer to detect the temperature of lubricating oil. The anti-electrochemical corrosion appliance is adopted for the part of the pump contacting the liquid to ensure the service life of the pump when seawater is pumped.
- The packing seal is adopted for the axial seal of the pump.
- Main shaft connection adopts half coupling or sleeve coupling, which has advantages of high reliability, simple structure, easy docking, convenient assembly and disassembly, accurate and reliable positioning.
- The gap between the impeller and impeller chamber (rotating part and static part) can be adjusted on pump installation foundation, which is convenient for operation.
- The motor terminal box and pump external lubricating water pipe are lied on left when viewed from outlet to pump. It also can be installed in any other direction base on guest of demand.

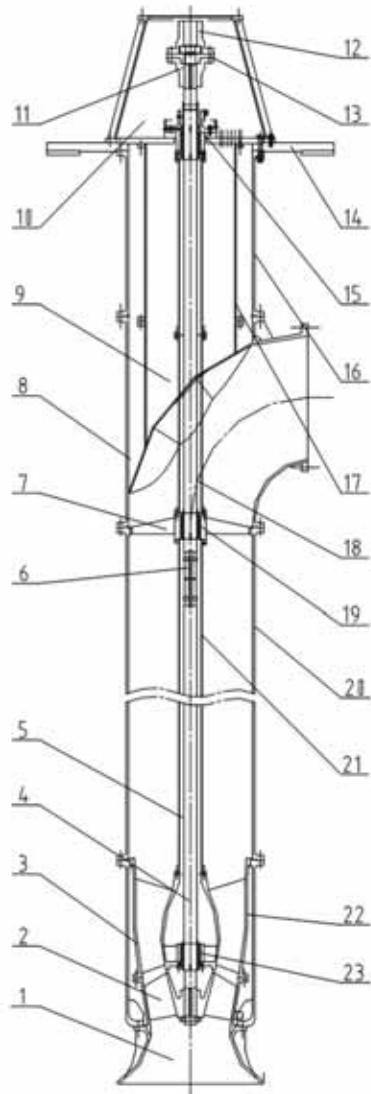
产品主要零部件材质 the material of chief components

介质 Media 零件 Parts	清水 Clear water	海水 Seawater	污水 (含磨料) (含氧化铁皮水) Sewage (incl. abrasiv e powder) (incl. Oxide Scale)
叶轮 Impeller	ZG270-500	ZG0Cr17Ni12Mo2 00Cr23Ni5Mo3N	ZG2Cr13 ZG0Cr13Ni4Mo
导叶体、 叶轮室 吸入喇叭口、密封 环 Diffuser, Shroud, Suction Bellmouth, Seal ring,	HT250	0Cr17Ni12Mo2 00Cr23Ni5Mo3N	ZG2Cr13 ZG0Cr13Ni4Mo
滤网 Strainer	0Cr18Ni9	00Gr17Ni14Mo2	0Cr18Ni9
外、内接管 、轴承支架 吐出弯管 External & internal column, bearing bracket, Discharge elbow	Q235B	ZG0Cr17Ni12Mo2 00Cr23Ni5Mo3N	Q235B
安装垫板、 电机支架 Base plate, Motor holder	Q235B	Q235B	Q235B
主轴、键 Main shaft	45	00Cr23Ni5Mo3N	2Cr13 35CrMo
轴套 Shaft sleeve	0Cr18Ni9 45	00Cr23Ni5Mo3N	0Cr18Ni9
导轴承 Guide Bearing	45+耐磨橡 胶 45+聚四氟 乙烯 45+abrasiv e rubber 45+Teflon	316+赛龙 316+聚四氟乙 烯 双相钢+赛龙 双相钢+聚四氟乙 烯 316+Thordon 316+Teflon Dual-phase steel+thordon Dual-phase steel +Teflon	45+耐磨橡胶 45+abrasive rubber
哈夫联轴器 Haff coupling	45	00Cr23Ni5Mo3N	2Cr13

注：根据用户具体使用要求，可另选其它适合材质。铸铁材质叶轮只适用于闭式叶轮。

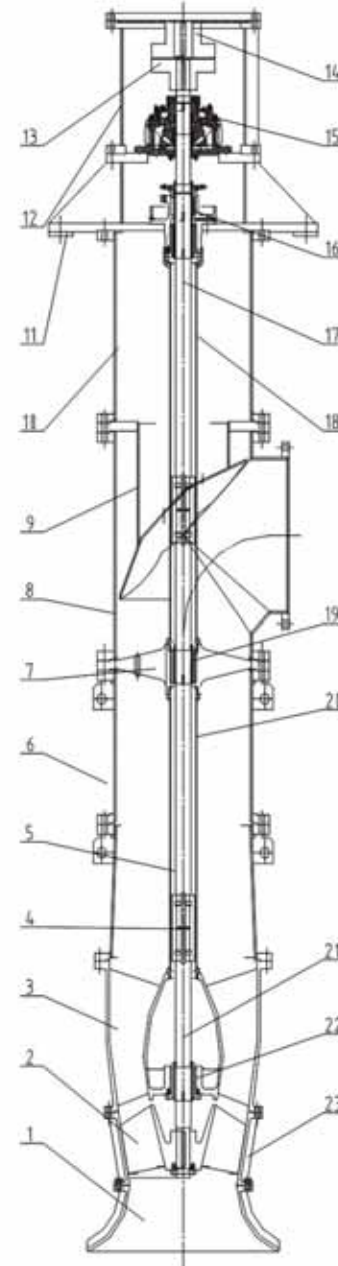
Remarks: Other materials are available at the request of clients. Cast iron is suitable only for closed type impeller.

LK 型立式斜流泵结构简图(型式:XD)Sectional Arrangement Of Type LK(Type XD)

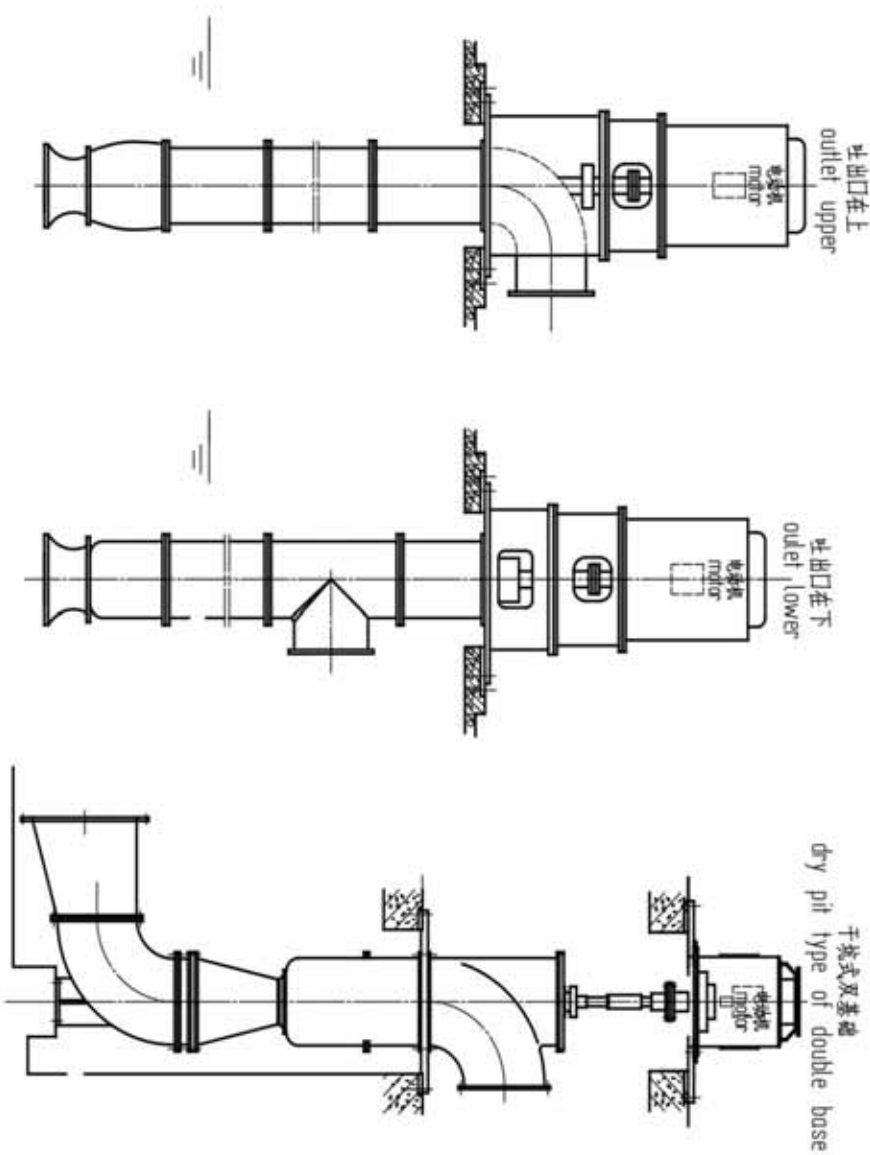


1. 吸入喇叭口 Suction bellmouth
2. 叶轮 Impeller
3. 导叶体 Diffuser
4. 下主轴 Main shaft(lower)
5. 下内接管 Internal column(lower)
6. 套筒联轴器 Sleeve coupling
7. 轴承支架 Bearing bracket
8. 吐出弯管 Discharge elbow
9. 导流片 Guide vane
10. 电机支座 Motor bracket
11. 泵联轴器 Pump coupling
12. 电机联轴器 Motor coupling
13. 调整螺母 Adjusting
14. 泵支撑板 Pump baseplate
15. 填料函部件 Packing box assembly
16. 上外接管 External column(upper)
17. 导流片接管 Guide vane connecting pipe
18. 上主轴 Main shaft(upper)
19. 上导轴承 Guide bearing(upper)
20. 中外接管 External column(mid.)
21. 中内接管 Internal column(mid.)
22. 下外接管 External column(lower)
23. 下导轴承 Guide bearing(lower)

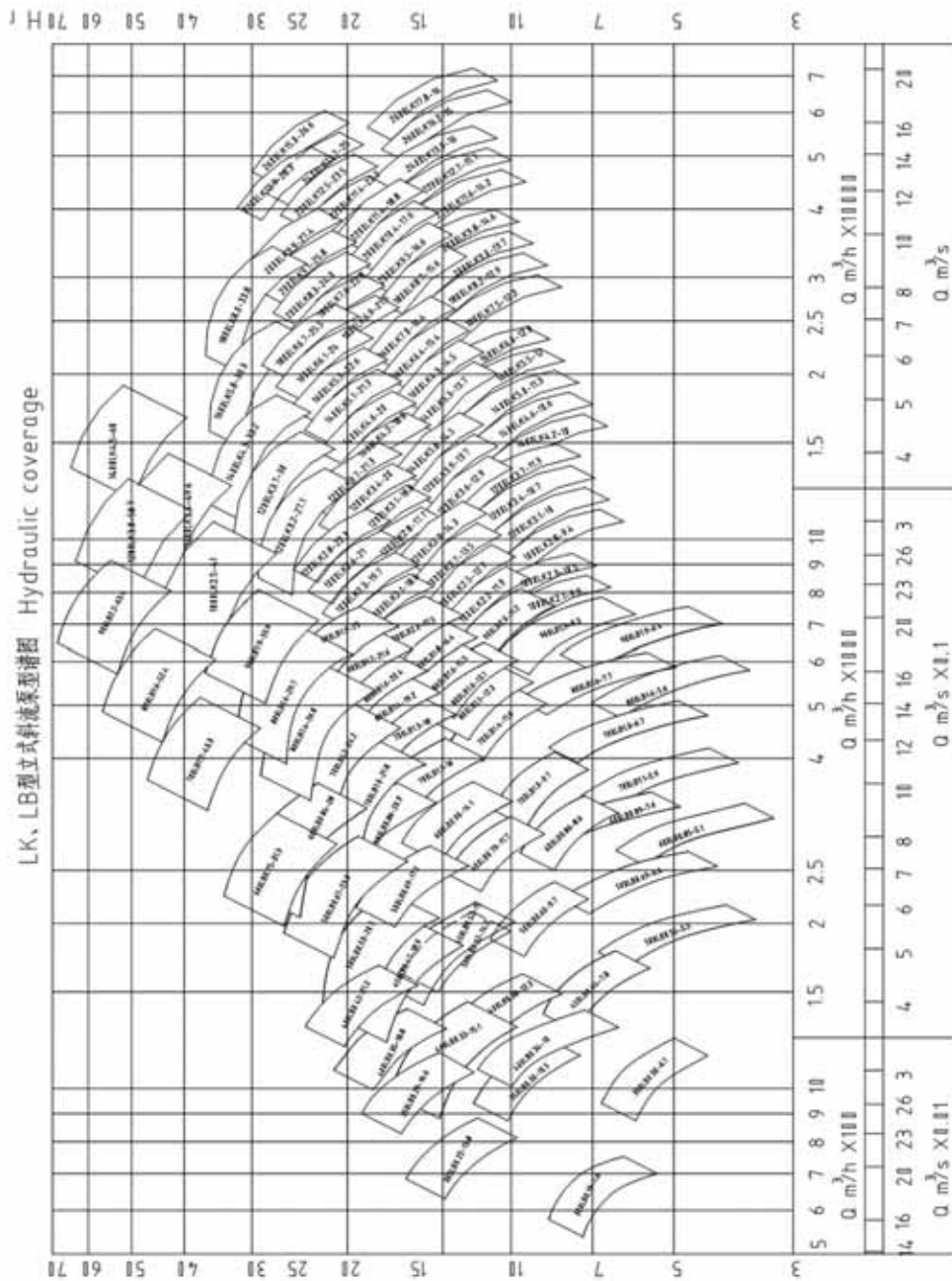
LB 型立式斜流泵结构简图(型式:XT)Sectional Arrangement Of Type LB(Type XT)



1. 吸入喇叭口 Suction bellmouth
2. 叶轮 Impeller
3. 导叶体 Diffuser
4. 套筒联轴器部件 Sleeve coupling assembly
5. 中主轴 Main shaft(mid.)
6. 中外接管 External column(mid.)
7. 轴承支架 Bearing bracket
8. 吐出弯管 Discharge elbow
9. 导流片接管 Guide vane connecting pipe
10. 上外接管 External column(upper)
11. 泵盖板 Pump cover plate
12. 安装垫板 Mounting plate
13. 泵联轴器 Pump coupling
14. 电机联轴器 Motor coupling
15. 推力轴承部件 Thrust bearing Assembly
16. 填料函部件 Packing box assembly
17. 上主轴 Main shaft(upper)
18. 上内接管 Internal column(upper)
19. 中导轴承 Guide bearing(mid.)
20. 下内接管 Internal column(lower)
21. 下主轴 Main shaft(lower)
22. 下导轴承 Guide bearing(lower)
23. 叶轮室 Shroud

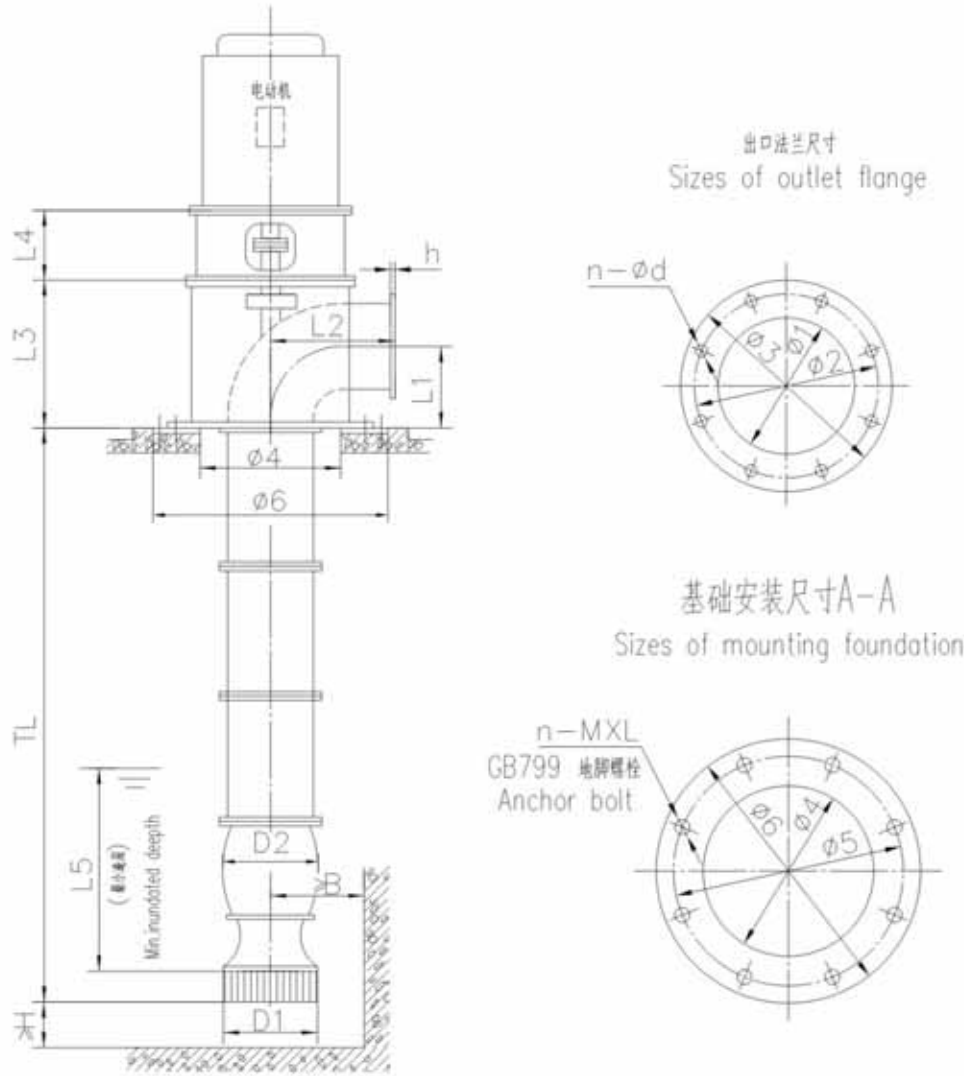


LB, LK 立式斜流泵型式示意图 Vertical Mixed Flow Pump figure drawing



LB 型斜流泵外形尺寸图(基本型式:ST)

Outline dimension drawings of LB type mixed flow pump (basic type: ST)



基础上长度TL可以 The size of the length TL under the
根据用户要求确定 foundation can be determined at customers' request

LB 型斜流泵外形尺寸表 Table of installation dimensions of type LB

泵型号 Pump type	安装板 Mounting plate										地脚螺栓 Anchor bolt			吐出法兰 Outlet flange				压力等级 press class MPa	
	H	B	L1	L2	L3	L4	L5	D1	D2	D3	D4	D5	n-M×L	φ1	φ2	φ3	h		n-φd
300LB0.19-7.6	200	400	325	450	825	455	800	440	445	600	900	1000	8-M24×500	300	395	440	24	12-φ22	0.6
300LB0.22-13.8	200	400	325	450	825	490	800	470	500	600	900	1000	8-M24×500	300	395	440	24	12-φ22	0.6
350LB0.30-6.1	250	400	375	500	870	490	900	530	550	700	1000	1100	12-M24×500	350	445	490	26	12-φ22	0.6
350LB0.30-10.5	250	400	375	500	870	490	900	530	495	700	1000	1100	12-M24×500	350	445	490	26	12-φ22	0.6
350LB0.29-16.6	250	400	375	500	870	520	900	530	550	700	1000	1100	12-M24×500	350	445	490	26	12-φ22	0.6
400LB0.34-10	250	450	425	550	970	490	1050	550	490	700	1000	1100	12-M30×600	400	495	540	28	16-φ22	0.6
400LB0.38-12.3	250	450	425	550	970	580	1050	550	605	800	1100	1200	12-M30×600	400	495	540	28	16-φ22	0.6
400LB0.33-15.1	250	450	425	500	970	580	1050	550	550	700	1000	1100	12-M30×600	400	495	540	28	16-φ22	0.6
400LB0.35-18.8	250	450	425	500	970	520	1050	550	550	700	1000	1100	12-M30×600	400	495	540	28	16-φ22	0.6
400LB0.42-21.2	250	450	425	500	970	580	1050	550	535	700	1000	1100	12-M30×600	400	495	540	28	16-φ22	0.6
450LB0.44-7.8	300	500	475	550	1040	550	1200	620	605	800	1100	1200	12-M30×600	450	550	595	30	16-φ22	0.6
450LB0.52-15	300	500	475	550	1040	620	1200	660	685	800	1100	1200	12-M30×600	450	550	595	30	16-φ22	0.6
450LB0.47-18.9	300	500	475	550	1040	620	1200	600	590	800	1100	1200	12-M30×600	450	550	595	30	16-φ22	0.6
500LB0.55-5.5	300	500	530	600	1090	550	1350	655	605	900	1200	1300	12-M30×600	500	600	645	32	20-φ22	0.6
500LB0.69-6.4	300	500	530	600	1090	580	1350	640	685	900	1200	1300	12-M30×600	500	600	645	32	20-φ22	0.6
500LB0.60-9.7	300	500	530	600	1090	580	1350	655	685	900	1200	1300	12-M30×600	500	600	645	32	20-φ22	0.6
500LB0.52-14.2	300	500	530	600	1090	620	1350	670	725	900	1200	1300	12-M30×600	500	600	645	32	20-φ22	0.6
500LB0.69-17.1	300	500	530	600	1090	620	1350	760	795	1000	1300	1400	12-M30×600	500	600	645	32	20-φ22	0.6
500LB0.53-20.5	300	500	530	600	1090	620	1350	640	670	900	1200	1300	12-M30×600	500	600	645	32	20-φ22	0.6
500LB0.67-23.9	300	500	530	600	1090	655	1350	750	685	900	1200	1300	12-M30×600	500	600	645	32	20-φ22	0.6
600LB0.85-5.1	350	600	630	630	1240	620	1500	840	750	1000	1400	1500	12-M30×600	600	705	755	36	20-φ26	0.6
600LB0.89-7.6	350	600	630	630	1240	620	1500	860	720	1000	1400	1500	12-M30×600	600	705	755	36	20-φ26	0.6
600LB0.86-8.6	350	600	630	630	1240	620	1500	860	795	1000	1400	1500	12-M30×600	600	705	755	36	20-φ26	0.6
600LB0.79-11.7	350	600	630	630	1240	620	1500	820	795	1000	1400	1500	12-M30×600	600	705	755	36	20-φ26	0.6

LB 型斜流泵外形尺寸表 Table of installation dimensions of type LB

泵型号 Pump type	安装板 Mounting plate										地脚螺栓 Anchor bolt			吐出法兰 Outlet flange				压力等级 press class MPa	
	H	B	L1	L2	L3	L4	L5	D1	D2	D3	D4	D5	n-M×L	φ1	φ2	φ3	h		n-φd
600LB0.90-14.1	350	600	630	700	1280	655	1500	860	895	1100	1500	1600	12-M30×600	600	705	755	36	20-φ26	0.6
600LB0.86-20.9	350	600	630	630	1280	655	1500	860	830	1000	1400	1500	12-M30×600	600	705	755	36	20-φ26	0.6
600LB0.84-28	350	600	630	630	1320	695	1800	860	795	1000	1400	1500	12-M30×600	600	705	755	36	20-φ26	0.6
600LB0.75-31.3	350	600	630	700	1320	720	1800	1000	895	1100	1500	1600	12-M30×600	600	705	755	36	20-φ26	0.6
700LB1.1-5.9	360	750	730	730	1370	620	1700	920	895	1100	1500	1600	16-M30×600	700	810	860	40	24-φ26	0.6
700LB1.3-6.7	360	750	730	730	1410	655	1700	1000	895	1200	1600	1700	16-M30×600	700	810	860	40	24-φ26	0.6
700LB1.0-9.7	360	750	730	730	1410	655	1700	930	895	1100	1500	1600	16-M30×600	700	810	860	40	24-φ26	0.6
700LB1.4-11.6	360	750	730	730	1450	695	1700	1020	895	1200	1600	1700	16-M30×600	700	810	860	40	24-φ26	0.6
700LB1.1-16	360	750	730	730	1450	695	1700	930	895	1100	1500	1600	16-M30×600	700	810	860	40	24-φ26	0.6
700LB1.3-18	360	750	730	730	1450	720	1700	1000	1005	1200	1600	1700	16-M30×600	700	810	860	40	24-φ26	0.6
700LB1.0-21.8	360	750	730	730	1450	720	1700	920	895	1100	1500	1600	16-M30×600	700	810	860	40	24-φ26	0.6
700LB1.2-24.2	360	750	730	730	1450	720	1700	960	895	1100	1500	1600	16-M30×600	700	810	860	40	24-φ26	0.6
700LB1.2-43.3	360	750	730	730	1470	850	1700	980	1050	1200	1600	1700	16-M30×600	700	810	860	40	24-φ26	0.6
800LB1.6-5.6	450	850	840	830	1490	655	1900	1100	1005	1200	1600	1700	16-M30×600	800	920	975	44	24-φ30	0.6
800LB1.6-7.7	450	850	840	830	1490	655	1900	1100	1005	1200	1600	1700	16-M30×600	800	920	975	44	24-φ30	0.6
800LB1.5-12.3	450	850	840	830	1530	695	1900	1000	810	1200	1600	1700	16-M30×600	800	920	975	44	24-φ30	0.6
800LB1.6-13.1	450	850	840	830	1530	695	1900	1000	830	1200	1600	1700	16-M30×600	800	920	975	44	24-φ30	0.6
800LB1.6-15.5	450	850	840	830	1570	760	1900	1000	830	1200	1600	1700	16-M30×600	800	920	975	44	24-φ30	0.6
800LB1.4-19.2	450	850	840	830	1530	720	1900	1000	910	1200	1600	1700	16-M30×600	800	920	975	44	24-φ30	0.6
800LB1.6-20.4	450	850	840	830	1530	720	1900	1000	940	1200	1600	1700	16-M30×600	800	920	975	44	24-φ30	0.6
800LB1.4-26.8	450	850	840	830	1530	850	1900	1000	930	1200	1600	1700	16-M30×600	800	920	975	44	24-φ30	0.6
800LB1.6-29.7	450	850	840	830	1530	850	1900	1000	970	1200	1600	1700	16-M30×600	800	920	975	44	24-φ30	0.6
800LB1.6-52.4	450	850	840	830	1560	980	1900	1000	1170	1400	1800	1900	16-M30×600	800	920	975	44	24-φ30	0.6
900LB1.9-6.4	500	950	940	930	1650	695	2100	1200	890	1400	1800	1900	20-M36×700	900	1020	1075	48	24-φ30	0.6
900LB1.9-9.3	500	950	940	930	1650	720	2100	1200	890	1400	1800	1900	20-M36×700	900	1020	1075	48	24-φ30	0.6

LB 型斜流泵外形尺寸表 Table of installation dimensions of type LB

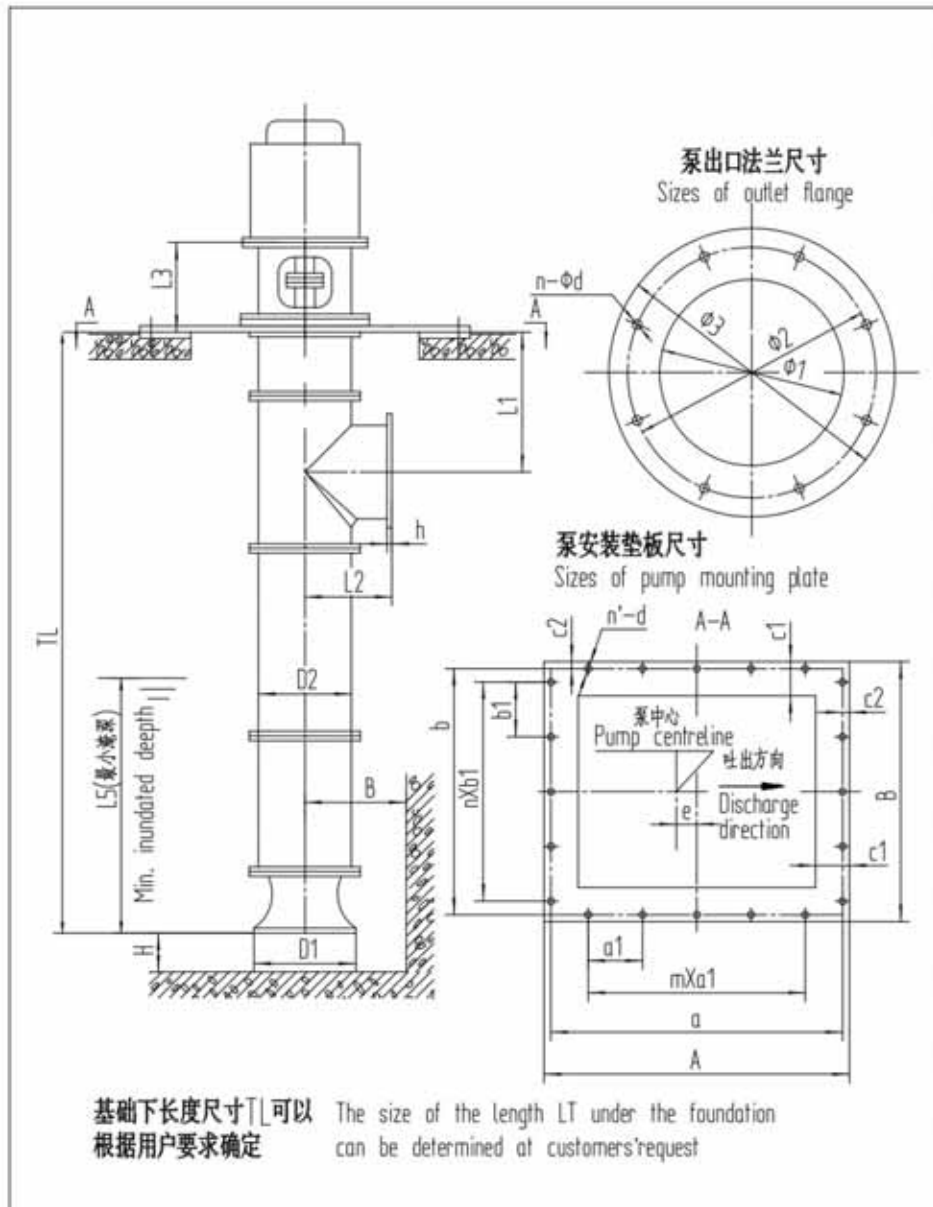
泵型号 Pump type	安装板 Mounting plate										地脚螺栓 Anchor bolt			吐出法兰 Outlet flange				压力等级 press class MPa	
	H	B	L1	L2	L3	L4	L5	D1	D2	D3	D4	D5	n-M×L	φ1	φ2	φ3	h		n-φd
900LB2.0-11.2	500	950	940	930	1650	720	2100	1200	950	1400	1800	1900	20-M36×700	900	1020	1075	48	24-φ30	0.6
900LB1.8-16.4	500	950	940	930	1650	850	2100	1200	1050	1400	1800	1900	20-M36×700	900	1020	1075	48	24-φ30	0.6
900LB2.0-17.5	500	950	940	930	1650	850	2100	1200	1080	1400	1800	1900	20-M36×700	900	1020	1075	48	24-φ30	0.6
900LB1.7-21.6	500	950	940	930	1650	850	2100	1200	970	1400	1800	1900	20-M36×700	900	1020	1075	48	24-φ30	0.6
900LB1.9-23	500	950	940	930	1650	850	2100	1200	1000	1400	1800	1900	20-M36×700	900	1020	1075	48	24-φ30	0.6
900LB1.9-33.9	500	950	940	930	1650	1000	2100	1200	1390	1600	2000	2100	20-M36×700	900	1020	1075	48	24-φ30	0.6
900LB2.2-43.4	500	950	940	930	1650	1000	2100	1200	1270	1500	1900	2000	20-M36×700	900	1020	1075	48	24-φ30	0.6

注：根据具体工程项目需要，泵外形尺寸允许变动。

Remarks: The overall dimensions of the pump are allowed to be changed acc. to the requirements of specific projects.

LK 型斜流泵外形尺寸图(基本型式:XD)

Drawing of installation dimensions of type LK(Basic type XD)



LK 型泵外形安装尺寸表

Table of installation dimensions of type LK

泵型号 Pump type	H	B	L1	L2	L3	L5	D1	D2	安装板代号 Mounting Plate code	$\phi 1$	$\phi 2$	$\phi 3$	h	n- ϕd
1000LK2. 8-9.4	600	1050	1000\1700	850	1400	2700	1300	1000	NB01-1000-2005	1000	1120	1175	50	28- $\phi 30$
1000LK2. 1-9.9	600	1050	1000\1700	850	1400	2700	1300	1000	NB01-1000-2005	1000	1120	1175	50	28- $\phi 30$
1000LK10. 5-10.5	600	1050	1000\1700	850	1400	2700	1300	1000	NB01-1000-2005	1000	1120	1175	50	28- $\phi 30$
1000LK2. 2-11.9	600	1050	1000\1700	850	1400	2700	1300	1000	NB01-1000-2005	1000	1120	1175	50	28- $\phi 30$
1000LK2. 5-12.7	600	1050	1000\1700	850	1400	2700	1300	1000	NB01-1000-2005	1000	1120	1175	50	28- $\phi 30$
1000LK2. 7-13.5	600	1050	1000\1700	850	1400	2700	1300	1000	NB01-1000-2005	1000	1120	1175	50	28- $\phi 30$
1000LK2. 1-18.6	600	1050	1000\1700	900	1400	2700	1300	1100	NB01-1100-2005	1000	1120	1175	50	28- $\phi 30$
1000LK2. 3-19.7	600	1050	1000\1700	900	1400	2700	1300	1100	NB01-1100-2005	1000	1120	1175	50	28- $\phi 30$
1000LK2. 6-21	600	1050	1000\1700	950	1400	2700	1300	1200	NB01-1200-2005	1000	1120	1175	50	28- $\phi 30$
1000LK2. 5-41	600	1050	1000\1700	1100	1400	2700	1300	1500	NB01-1500-2005	1000	1120	1175	50	28- $\phi 30$
1200LK3. 1-10	700	1250	1250\1850	950	1500	2900	1500	1200	NB01-1200-2005	1200	1340	1405	50	32- $\phi 33$
1200LK3. 4-10.7	700	1250	1250\1850	950	1500	2900	1500	1200	NB01-1200-2005	1200	1340	1405	50	32- $\phi 33$
1200LK3. 7-11.3	700	1250	1250\1850	950	1500	2900	1500	1200	NB01-1200-2005	1200	1340	1405	50	32- $\phi 33$
1200LK3. 6-12.9	700	1250	1250\1850	950	1500	2900	1500	1200	NB01-1200-2005	1200	1340	1405	50	32- $\phi 33$
1200LK3. 9-13.7	700	1250	1250\1850	950	1500	2900	1500	1200	NB01-1200-2005	1200	1340	1405	50	32- $\phi 33$
1200LK2. 9-14.3	700	1250	1250\1850	950	1500	2900	1500	1200	NB01-1200-2005	1200	1340	1405	50	32- $\phi 33$
1200LK2. 8-17.7	700	1250	1250\1850	1000	1500	2900	1500	1300	NB01-1300-2005	1200	1340	1405	50	32- $\phi 33$
1200LK3. 1-18.8	700	1250	1250\1850	1000	1500	2900	1500	1300	NB01-1300-2005	1200	1340	1405	50	32- $\phi 33$
1200LK3. 4-20	700	1250	1250\1850	1050	1500	2900	1500	1400	NB01-1400-2005	1200	1340	1405	50	32- $\phi 33$
1200LK3. 7-21.3	700	1250	1250\1850	1050	1500	2900	1500	1400	NB01-1400-2005	1200	1340	1405	50	32- $\phi 33$
1200LK2. 8-22.3	700	1250	1250\1850	950	1500	2900	1500	1200	NB01-1200-2005	1200	1340	1405	50	32- $\phi 33$
1200LK3. 2-27.1	700	1250	1250\1850	1050	1500	2900	1500	1400	NB01-1400-2005	1200	1340	1405	50	32- $\phi 33$
1200LK3. 7-30	700	1250	1250\1850	1050	1500	2900	1500	1400	NB01-1400-2005	1200	1340	1405	50	32- $\phi 33$
1200LK3. 4-49.6	700	1250	1250\1850	1250	1500	2900	1500	1800	NB01-1800-2005	1200	1340	1405	50	32- $\phi 33$
1200LK3. 0-58.7	700	1250	1250\1850	1100	1500	2900	1500	1500	NB01-1500-2005	1200	1340	1405	50	32- $\phi 33$
1400LK4. 2-10	800	1500	1450\2050	1050	1600	3000	1700	1400	NB01-1400-2005	1400	1560	1630	50	36- $\phi 36$
1400LK4. 6-10.6	800	1500	1450\2050	1050	1600	3000	1700	1400	NB01-1400-2005	1400	1560	1630	50	36- $\phi 36$
1400LK5. 0-11.3	800	1500	1450\2050	1050	1600	3000	1700	1400	NB01-1400-2005	1400	1560	1630	50	36- $\phi 36$
1400LK5. 3-13.7	800	1500	1450\2050	1050	1600	3000	1700	1400	NB01-1400-2005	1400	1560	1630	50	36- $\phi 36$
1400LK5. 8-14.5	800	1500	1450\2050	1050	1600	3000	1700	1400	NB01-1400-2005	1400	1560	1630	50	36- $\phi 36$
1400LK4. 2-18.8	800	1500	1450\2050	1100	1600	3000	1700	1500	NB01-1500-2005	1400	1560	1630	50	36- $\phi 36$
1400LK4. 6-20	800	1500	1450\2050	1150	1600	3000	1700	1600	NB01-1600-2005	1400	1560	1630	50	36- $\phi 36$
1400LK5. 1-21.3	800	1500	1450\2050	1150	1600	3000	1700	1600	NB01-1600-2005	1400	1560	1630	50	36- $\phi 36$
1400LK4. 3-33.2	800	1500	1450\2050	1100	1600	3000	1700	1500	NB01-1500-2005	1400	1560	1630	50	36- $\phi 36$
1400LK4. 5-60	800	1500	1450\2050	1250	1600	3000	1700	1800	NB01-1800-2005	1400	1560	1630	50	36- $\phi 36$
1600LK5. 5-12	900	1700	1650\2150	1150	1700	3300	1900	1600	NB01-1600-2005	1600	1760	1830	50	40- $\phi 36$
1600LK6. 0-12.8	900	1700	1650\2150	1150	1700	3300	1900	1600	NB01-1600-2005	1600	1760	1830	50	40- $\phi 36$
1600LK4. 3-14.5	900	1700	1650\2150	1150	1700	3300	1900	1600	NB01-1600-2005	1600	1760	1830	50	40- $\phi 36$

LK 型泵外形安装尺寸表

Table of installation dimensions of type LK

泵型号 Pump type	H	B	L1	L2	L3	L5	D1	D2	安装板代号 Mounting Plate code	φ 1	φ 2	φ 3	h	n-φ d
1600LK6, 4-15, 4	900	1700	1650\2150	1150	1700	3300	1900	1600	NB01-1600-2005	1600	1760	1830	50	40-φ 36
1600LK7, 0-16, 4	900	1700	1650\2150	1150	1700	3300	1900	1600	NB01-1600-2005	1600	1760	1830	50	40-φ 36
1600LK5, 5-22, 6	900	1700	1650\2150	1250	1700	3300	1900	1800	NB01-1800-2005	1600	1760	1830	50	40-φ 36
1600LK6, 1-24	900	1700	1650\2150	1250	1700	3300	1900	1800	NB01-1800-2005	1600	1760	1830	50	40-φ 36
1600LK5, 8-33, 3	900	1700	1650\2150	1250	1700	3300	1900	1800	NB01-1800-2005	1600	1760	1830	50	40-φ 36
1800LK7, 5-12, 2	1000	1900	1850\2350	1250	1800	3600	2100	1800	NB01-1800-2005	1800	1970	2045	50	44-φ 39
1800LK8, 2-12, 9	1000	1900	1850\2350	1250	1800	3600	2100	1800	NB01-1800-2005	1800	1970	2045	50	44-φ 39
1800LK8, 7-15, 6	1000	1900	1850\2350	1250	1800	3600	2100	1800	NB01-1800-2005	1800	1970	2045	50	44-φ 39
1800LK6, 9-21, 5	1000	1900	1850\2350	1350	1800	3600	2100	2000	NB01-2000-2005	1800	1970	2045	50	44-φ 39
1800LK7, 6-22, 8	1000	1900	1850\2350	1350	1800	3600	2100	2000	NB01-2000-2005	1800	1970	2045	50	44-φ 39
1800LK6, 7-25, 5	1000	1900	1850\2350	1250	1800	3600	2100	1800	NB01-1800-2005	1800	1970	2045	50	44-φ 39
1800LK8, 0-33, 8	1000	1900	1850\2350	1350	1800	3600	2100	2000	NB01-2000-2005	1800	1970	2045	50	44-φ 39
2000LK9, 0-13, 7	1100	2200	2050\2550	1350	1900	3900	2300	2000	NB01-2000-2005	2000	2180	2265	50	48-φ 42
2000LK9, 8-14, 6	1100	2200	2050\2550	1350	1900	3900	2300	2000	NB01-2000-2005	2000	2180	2265	50	48-φ 42
2000LK9, 5-16, 6	1100	2200	2050\2550	1350	1900	3900	2300	2000	NB01-2000-2005	2000	2180	2265	50	48-φ 42
2000LK10, 4-17, 6	1100	2200	2050\2550	1350	1900	3900	2300	2000	NB01-2000-2005	2000	2180	2265	50	48-φ 42
2000LK8, 3-24, 3	1100	2200	2050\2550	1350	1900	3900	2300	2000	NB01-2000-2005	2000	2180	2265	50	48-φ 42
2000LK9, 1-25, 8	1100	2200	2050\2550	1350	1900	3900	2300	2000	NB01-2000-2005	2000	2180	2265	50	48-φ 42
2000LK9, 9-27, 4	1100	2200	2050\2550	1450	1900	3900	2300	2200	NB01-2200-2005	2000	2180	2265	50	48-φ 42
2200LK11, 6-14, 2	1300	2400	2250\2650	1450	2000	4200	2500	2200	NB01-2200-2005	2200	2390	2475	60	52-φ 42
2200LK12, 7-15, 1	1300	2400	2250\2650	1450	2000	4200	2500	2200	NB01-2200-2005	2200	2390	2475	50	52-φ 42
2200LK11, 4-18, 8	1300	2400	2250\2650	1450	2000	4200	2500	2200	NB01-2200-2005	2200	2390	2475	50	52-φ 42
2200LK11, 4-22, 2	1300	2400	2250\2650	1550	2000	4200	2500	2400	NB01-2400-2005	2200	2390	2475	50	52-φ 42
2200LK12, 5-23, 5	1300	2400	2250\2650	1550	2000	4200	2500	2400	NB01-2400-2005	2200	2390	2475	50	52-φ 42
2200LK12, 9-28, 3	1300	2400	2250\2650	1550	2000	4200	2500	2400	NB01-2400-2005	2200	2390	2475	50	52-φ 42
2400LK13, 9-16	1400	2600	2500\2900	1550	2100	4400	2800	2400	NB01-2400-2005	2400	2600	2680	50	56-φ 42
2400LK13, 7-25	1400	2600	2500\2900	1550	2100	4400	2800	2400	NB01-2400-2005	2400	2600	2680	50	56-φ 42
2600LK16, 2-15	1400	2600	2700\3100	1650	2100	4600	3100	2600	NB01-2600-2005	2600	2810	2905	50	60-φ 48
2600LK17, 8-16	1400	2600	2700\3100	1650	2100	4600	3100	2600	NB01-1000-2005	2600	2810	2905	50	60-φ 48
2600LK15, 0-26, 6	1400	2600	2700\3100	1650	2100	4600	3100	2600	NB01-1000-2005	2600	2810	2905	50	60-φ 48

注：吐出口径大于等于 1000mm 时，吐出法兰压力等级均为 0.6Mpa。

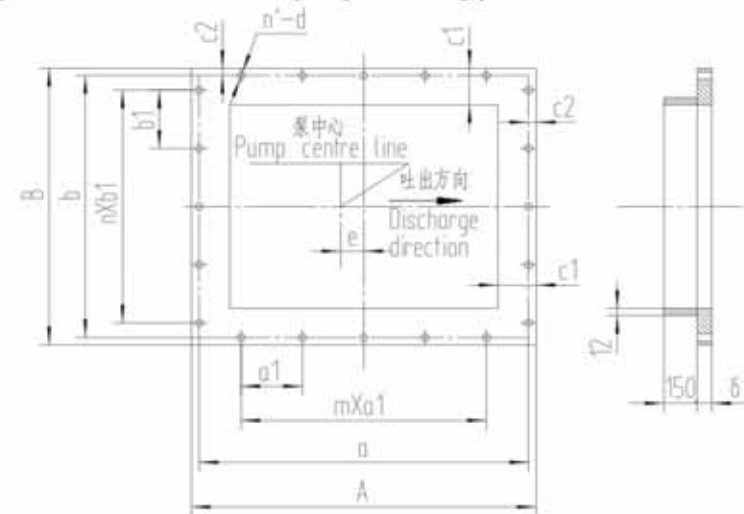
根据具体工程项目需要，泵外形尺寸允许变动。

Remarks: The pressure class for outlet flanges is 0.6Mpa when the nozzle sizes are larger or equal to 1000mm.

The overall dimensions of the pump are allowed to be changed acc. to the requirements of specific projects.

泵安装垫板外形尺寸图

Drawing of overall dimensions of pump mounting plate



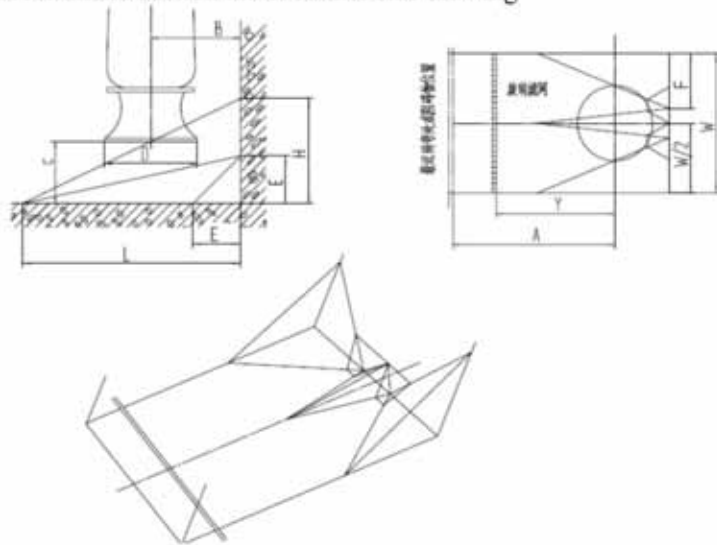
泵安装垫板外形尺寸表

Table of overall dimensions of pump mounting plate

安装板代号 mounting plate code	A	B	a	a ₁	m x a ₁	b	b ₁	n x b ₁	c ₁	c ₂	n-d	δ	e	重量 wt. kg
NB01-500-2005	1750	1350	1650	300	4×300	1250	300	3×300	250	50	18-φ 40	40	150	460
NB01-600-2005	1850	1450	1750	300	4×300	1350	300	3×300	250	50	18-φ 40	40	150	500
NB01-700-2005	1950	1550	1850	350	4×350	1450	350	3×350	250	50	18-φ 40	40	150	540
NB01-800-2005	2050	1700	1950	350	4×350	1600	350	3×350	250	50	18-φ 40	40	125	590
NB01-900-2005	2150	1800	2050	400	4×400	1700	400	4×400	250	50	20-φ 50	40	125	620
NB01-1000-2005	2250	1900	2150	400	4×400	1800	400	4×400	250	50	20-φ 50	40	125	660
NB01-1100-2005	2350	2000	2250	450	4×450	1900	450	4×450	250	50	20-φ 50	40	125	700
NB01-1200-2005	2450	2100	2350	450	5×450	2000	450	4×450	250	50	22-φ 55	40	125	730
NB01-1300-2005	2670	2320	2550	450	5×450	2200	450	4×450	310	60	22-φ 55	50	125	1170
NB01-1400-2005	2770	2420	2650	450	5×450	2300	450	4×450	310	60	22-φ 55	50	125	1220
NB01-1500-2005	2870	2520	2750	500	5×500	2400	500	4×500	310	60	22-φ 55	50	125	1280
NB01-1600-2005	2970	2620	2850	500	5×500	2500	500	4×500	310	60	22-φ 55	50	125	1320
NB01-1800-2005	3350	3050	3200	500	6×500	2900	500	5×500	375	75	26-φ 65	50	100	1800
NB01-2000-2005	3550	3250	3400	500	6×500	3100	500	5×500	375	75	26-φ 65	50	100	1920
NB01-2200-2005	3750	3450	3600	500	7×500	3300	500	6×500	375	75	30-φ 65	50	100	2050
NB01-2400-2005	3950	3650	3800	500	7×500	3500	500	6×500	375	75	30-φ 65	50	100	2170
NB01-2600-2005	4150	3850	4000	500	7×500	3700	550	6×550	375	75	30-φ 65	50	100	2300

泵推荐吸水水道尺寸图

The pump recommend suction mater runner size drawing



尺寸代号 size code	C	B	Y	W	A	L	H	E	F
尺寸比例 size ratio	0.4D	0.75D	3.5D	2D	6D	1.75D	0.7D	0.3D	0.7D

上图 of 泵两侧有隔墙的流道图，如无隔墙，则相关尺寸参考下表（此时W为两泵间的最小间距）

Above drawing is the runner drawing for the pump that owns party wall at double side, check the following table if it haven't party wall (the "W" is the min-distance between two pumps)

